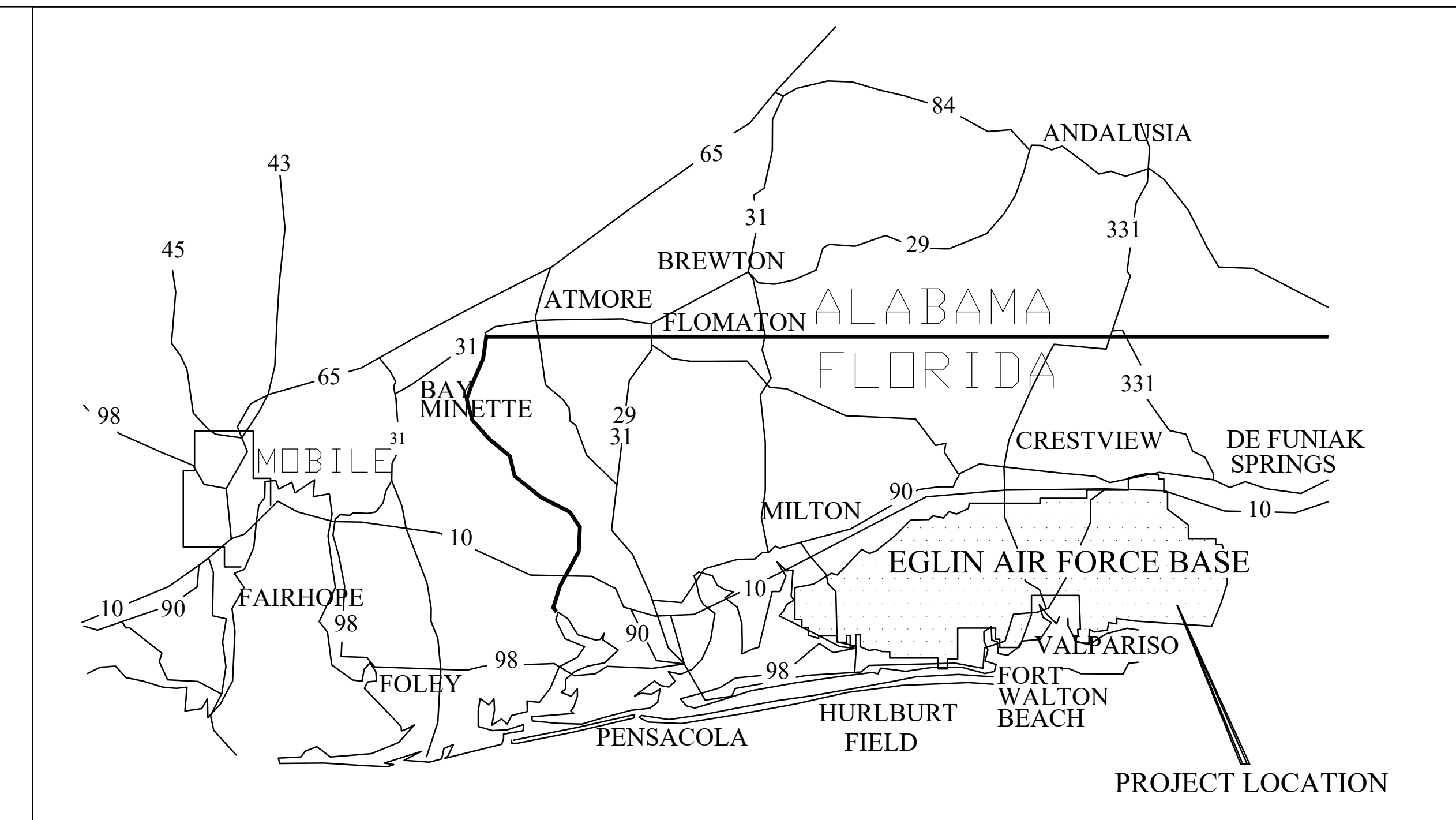
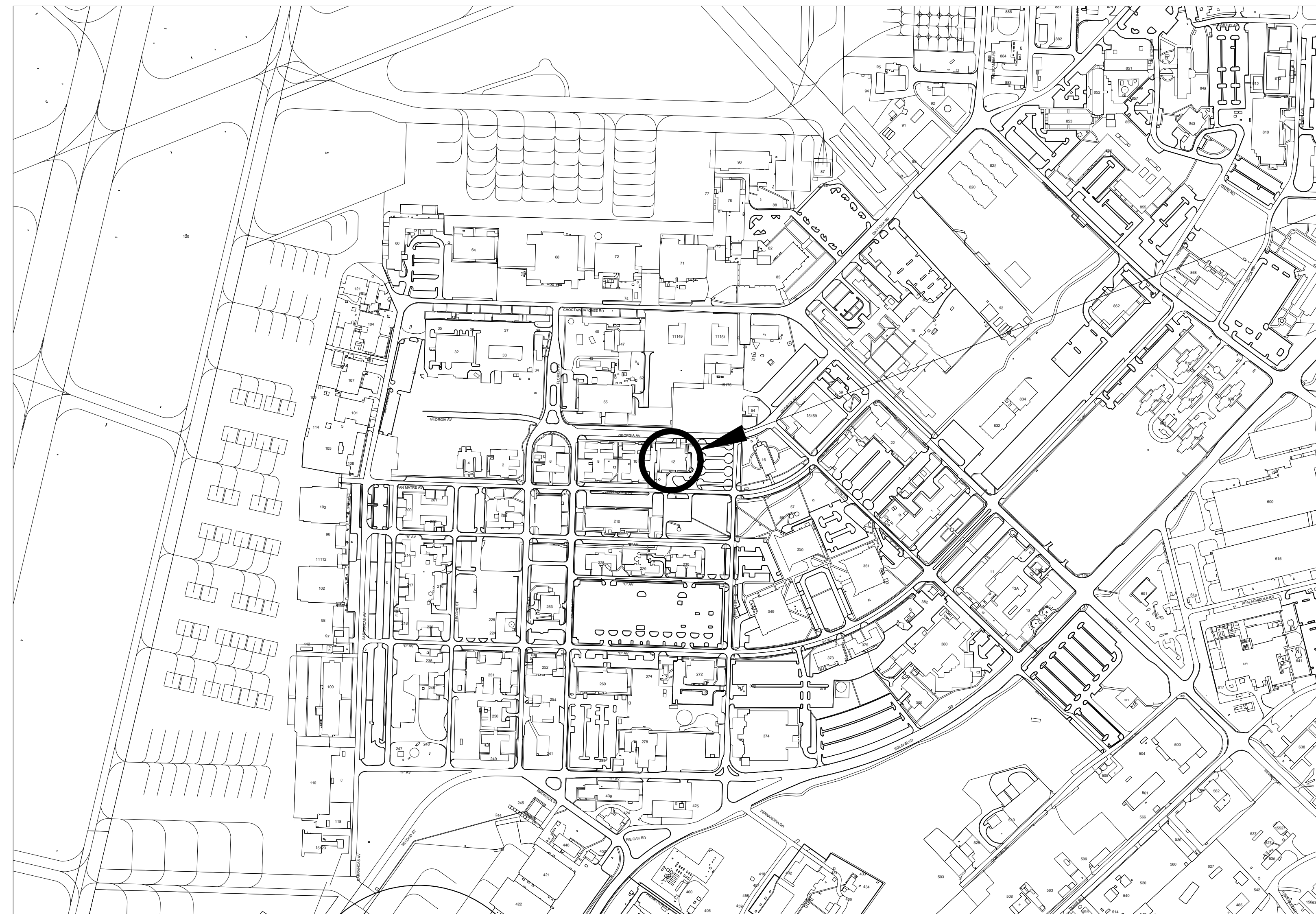


RPR- REPLACE ROOF TOP HVAC PACKAGE UNITS #1 AND #2 B12

Eglin Air Force Base, FL
Project No. : FTFA 25-CB63

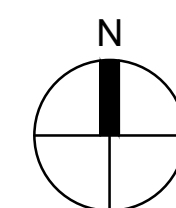


VICINITY MAP



BLDG. 12
LOCATION

PROJECT LOCATION MAP

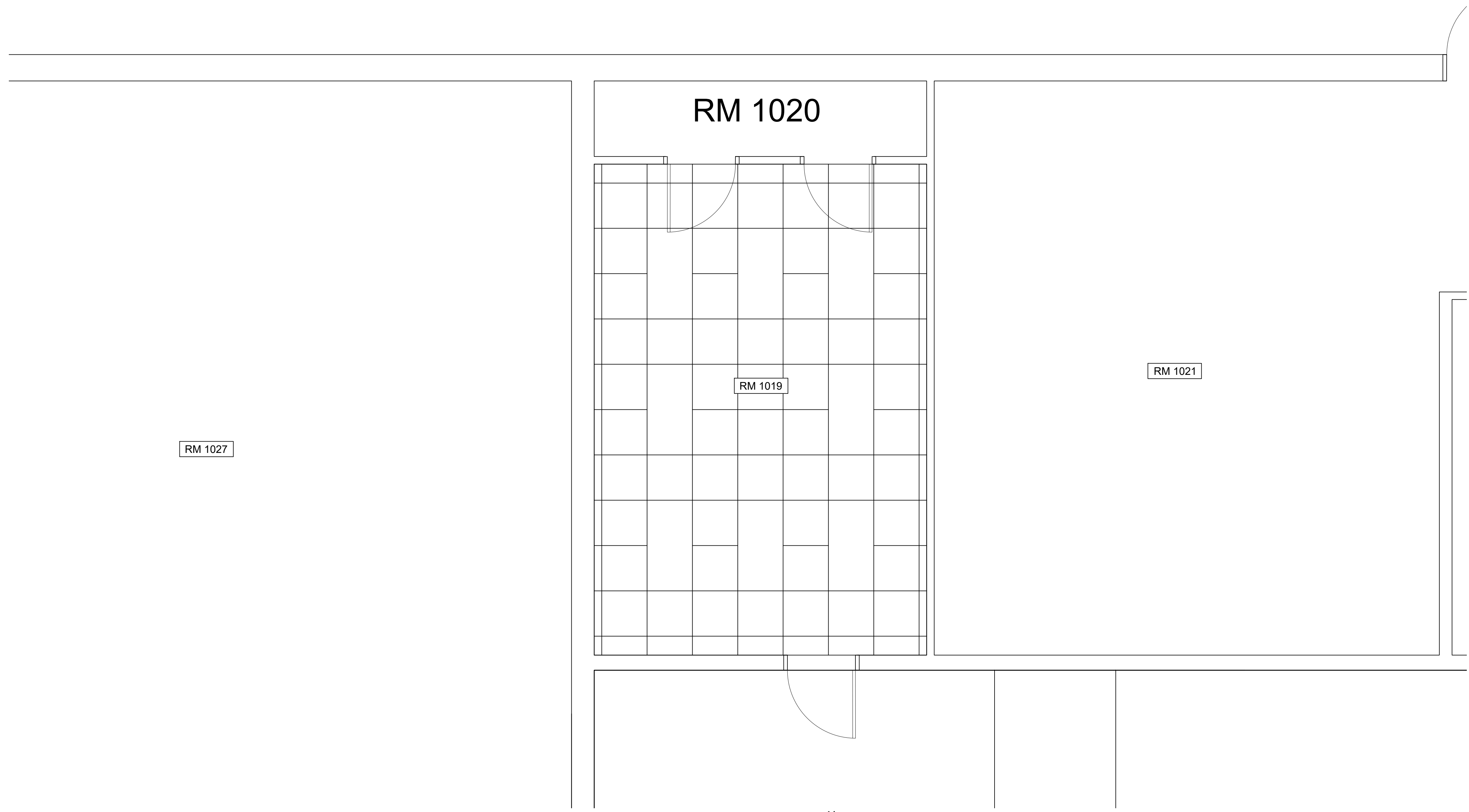


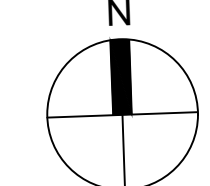
DRAWING INDEX	
GENERAL	
G-001	TITLE, VICINITY AND LOCATION MAPS AND INDEX OF DRAWINGS
ARCHITECTURAL	
A-101	ARCHITECTURAL DEMO AND NEW WORK PLAN
MECHANICAL	
M-101	MECHANICAL FLOOR PLAN
M-102	MECHANICAL ROOF DEMO PLAN MECHANICAL ROOF NEW WORK PLAN
M-501	MECHANICAL DETAILS
ELECTRICAL	
E-101	ELECTRICAL 1ST FLOOR DEMO AND NEW WORK PLAN
E-102	ELECTRICAL ROOF NEW WORK PLAN

35% PRELIMINARY 02 SEPTEMBER 2025

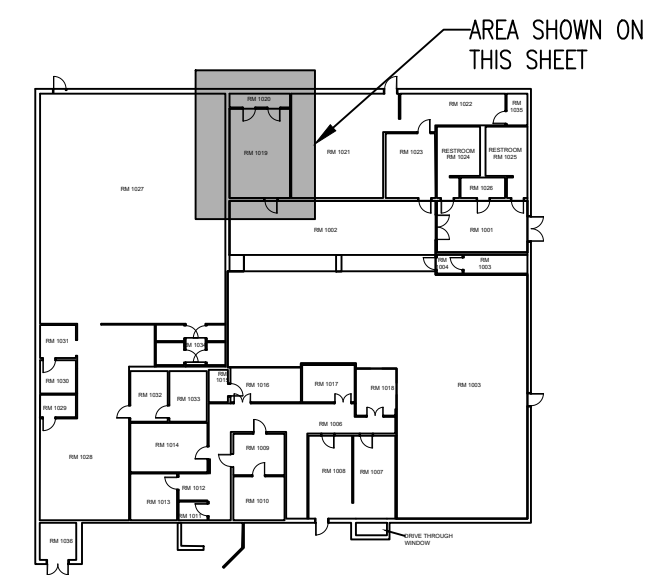
REVISION	DATE	DESCRIPTION	BY	APPR'D
BASE CIVIL ENGINEER EGLIN AIR FORCE BASE, FLORIDA				
SABER PROJECT MANAGER		TITLE		
DATE		RPR- REPLACE ROOF TOP HVAC PACKAGE UNITS #1 AND #2 B12		
SIGNATURE				
APPROVED				
CENM				
DRAWN BY A. PORTER				
PROJ. ENGR. SR. ENGINEER				
SABER DRAWING BASED ON 35% DESIGN		CONTENTS		
		TITLE, VICINITY AND LOCATION MAPS AND INDEX OF DRAWINGS		
APPROVED		DATE		
96 CEG/CEN		02 SEPTEMBER 2025		
APPROVED		SCALE		
BASE CIVIL ENGINEER		NOT TO SCALE		
INDEX NO.	PROJ. NO.	DRAWING NO.	FILE NO.	SHEET 1 OF 7
G-001	FTFA 25-CB63			





1 ARCHITECTURAL PLAN 

- ARCHITECTURAL DEMO AND NEW WORK**
- ① DEMO EXISTING SUSPENDED CEILING GRID AND TILES.
 - ② INSTALL NEW 2X2 GRID & ACOUSTICAL CEILING TILES. COORDINATE CEILING WITH LIGHTING, SPRINKLER HEADS, AND DUCTLESS CASSETTE LOCATION.
 - ③ PATCH AND FINISH PENETRATIONS TO MAINTAIN FIRE RATING (INTERIOR) AND WEATHERPROOFING (EXTERIOR).



KEY PLAN



INDEX NO.
A-101

35% PRELIMINARY 02 SEPTEMBER 2025

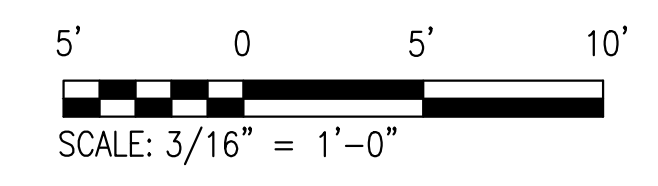
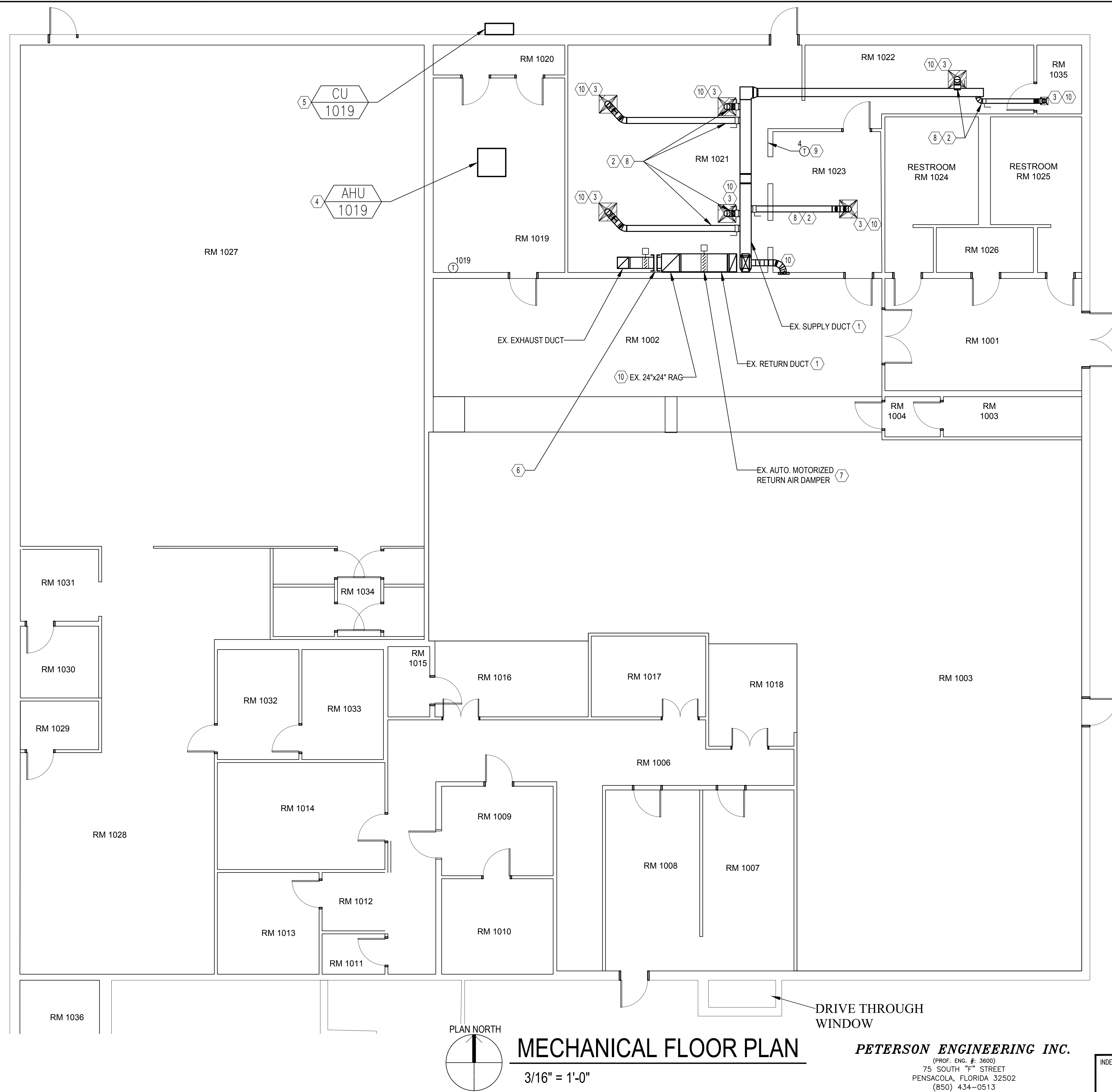
REVISION	DATE	DESCRIPTION	BY	APPR'D
BASE CIVIL ENGINEER EGLIN AIR FORCE BASE, FLORIDA				
SABER PROJECT MANAGER		TITLE RPR- REPLACE ROOF TOP HVAC PACKAGE UNITS #1 AND #2 B12		
DATE _____ SIGNATURE _____ APPROVED _____ CENM _____ DRAWN BY <u>A. PORTER</u> PROJ. ENGR. SR. ENGINEER		CONTENTS ARCHITECTURAL DEMO AND NEW WORK PLAN		
SABER DRAWING BASED ON 35% DESIGN		APPROVED _____ DATE 02 SEPTEMBER 2025 96 CEG/CEN APPROVED _____ SCALE 3/8" = 1' - 0" BASE CIVIL ENGINEER		
SPEC. NO.	PROJ. NO.	DRAWING NO.	FILE NO.	SHEET 2 OF 7
	FTFA 25-CB63			

GENERAL NOTES

1. THE APPROXIMATE LOCATION OF EXISTING EQUIPMENT AND UTILITIES ARE SHOWN. THE CONTRACTOR SHALL DETERMINE THE EXACT LOCATION OF ALL EXISTING EQUIPMENT AND UTILITIES ON PROJECT BEFORE COMMENCING WORK.

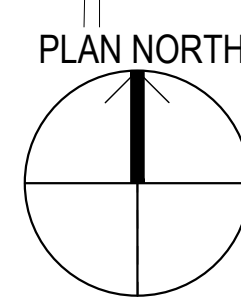
KEY NOTES

1. PERFORM DUCT CLEANING IN ALL EXISTING SUPPLY AND RETURN DUCTWORK. IF THERE IS BIOLOGICAL GROWTH REMAINING IN DUCTWORK AFTER DUCT CLEANING IS PERFORMED, ENCAPSULATE DUCTWORK.
2. REMOVE EXISTING FLEX DUCTWORK AND PROVIDE NEW FLEX DUCTWORK. UFC 3-410-01 SECTION 4-2.6.6 LIMITS FLEX DUCT RUNS TO 5'. PER ON SITE MEETING AND RFI THE SCOPE WAS DETERMINED TO BE REPLACEMENT IN KIND.
3. PROVIDE 90 DEGREE HARD-DUCTED ELBOWS ON ALL DIFFUSERS WHERE FLEX DUCT IS BEING REPLACED. FLEX DUCT SHALL NOT BE USED FOR CHANGES OF DIRECTION GREATER THAN 45°.
4. PROVIDE DUCTLESS CEILING CASSETTE. PROVIDE WITH CONDENSATE PUMP WITH CHECK VALVE. PROVIDE TRAPPED, INSULATED CONDENSATE PIPING FULL SIZE OF EQUIPMENT OUTLET. ROUTE CONDENSATE TO EXTERIOR OF BUILDING. SLEEVE AND SEAL ALL PENETRATIONS WATER-TIGHT THROUGH BUILDING ENVELOPE. COORDINATE INSTALLATION OF DUCTLESS CEILING CASSETTE WITH FIRE SPRINKLER SYSTEM TO AVOID MODIFICATION OR REMOVAL OF THE EXISTING FIRE SPRINKLER SYSTEM.
5. PROVIDE WALL-MOUNTED CONDENSING UNIT. MOUNT CONDENSING UNIT 12-24 INCHES ABOVE GROUND. ROUTE REFRIGERANT PIPING TO ASSOCIATED AIR HANDLING UNIT IN ACCORDANCE WITH MANUFACTURER'S RECOMMENDATIONS. COORDINATE WITH ARCHITECTURAL, STRUCTURAL, AND BUILDING UTILITIES TO MINIMIZE OFFSETS AND TOTAL REFRIGERANT LINE LENGTHS. SLEEVE AND SEAL ALL PENETRATIONS WATER-TIGHT THROUGH BUILDING ENVELOPE. REFRIGERANT LINE SET ANCHORED TO EXTERIOR WALL.
6. DISCONNECT EXISTING EXHAUST DUCT FROM RETURN AIR DUCT. CAP DUCTS.
7. SET MOTORIZED DAMPER TO FULL OPEN AND DISCONNECT DAMPER FROM POWER SUPPLY. CONFIRM DAMPER REMAINS FULLY OPEN AFTER DISCONNECTED FROM POWER SUPPLY.
8. PROVIDE MANUAL VOLUME DAMPER AT BEGINNING OF EACH DUCT TAKEOFF AND BALANCE.
9. PROVIDE NEW 2H/2C THERMOSTAT. PROVIDE NEW CONTROL WIRING.
10. CONTRACTOR SHALL ENGAGE THE SERVICES OF AN ABC OR NEBB CERTIFIED TEST AND BALANCE AGENCY. PRIOR TO ANY CONSTRUCTION ACTIVITIES. PRIOR TO END OF CONSTRUCTION ACTIVITIES, TEST AND BALANCE ALL SUPPLY AIR DEVICES SERVED BY ROOM.



35% SUBMITTAL

REVISION	DATE	DESCRIPTION	BY	APPR'D
BASE CIVIL ENGINEER EGLIN AIR FORCE BASE, FLORIDA				
SABER PROJECT MANAGER		TITLE		
DATE	REPLACE ROOF TOP HVAC PACKAGE UNITS #1 AND #2 B12			
SIGNATURE				
APPROVED				
CENM				
DRAWN BY TJM				
PROJ. ENGR. GDP				
SABER AS-BUILT DRAWING BASED ON 35% DESIGN		CONTENTS		
		MECHANICAL FLOOR PLAN		
APPROVED		DATE		
96 CEG/CEN		29 AUG 2025		
APPROVED		SCALE		
BASE CIVIL ENGINEER		AS SHOWN		
SPEC. NO.	PROJ. NO.	DRAWING NO.	FILE NO.	
	FTFA 25-CB63			



MECHANICAL FLOOR PLAN

3/16" = 1'-0"

PETERSON ENGINEERING INC.

(PROF. ENG. # 3600)
75 SOUTH "F" STREET
PENSACOLA, FLORIDA 32502
(850) 434-0513
PEI 25109

INDEX NO.
M-101

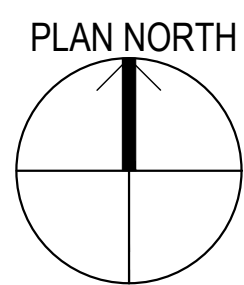
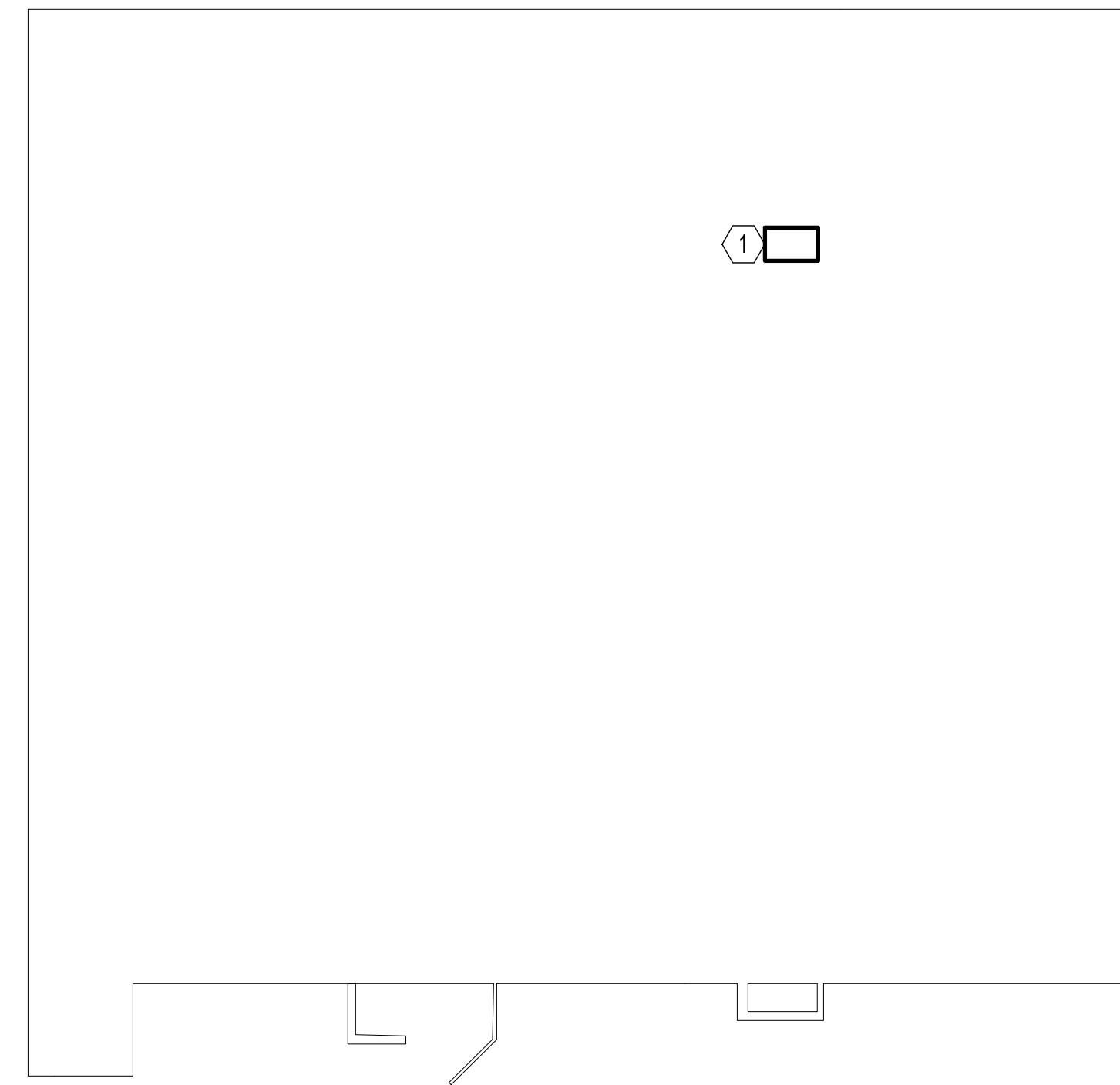
FILE NAME: D:\PROJECT\2025\25109 Replace Roof Top HVAC Package Units #1 and #2 B12\DWG\Mech\25109 MECHANICAL.dwg LAYOUT NAME: M-101 PLOTTED: Friday, August 29, 2025 - 3:57pm USER: tmerigan

GENERAL NOTES

1. THE APPROXIMATE LOCATION OF EXISTING EQUIPMENT AND UTILITIES ARE SHOWN. THE CONTRACTOR SHALL DETERMINE THE EXACT LOCATION OF ALL EXISTING EQUIPMENT AND UTILITIES ON PROJECT BEFORE COMMENCING WORK.

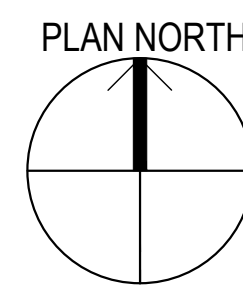
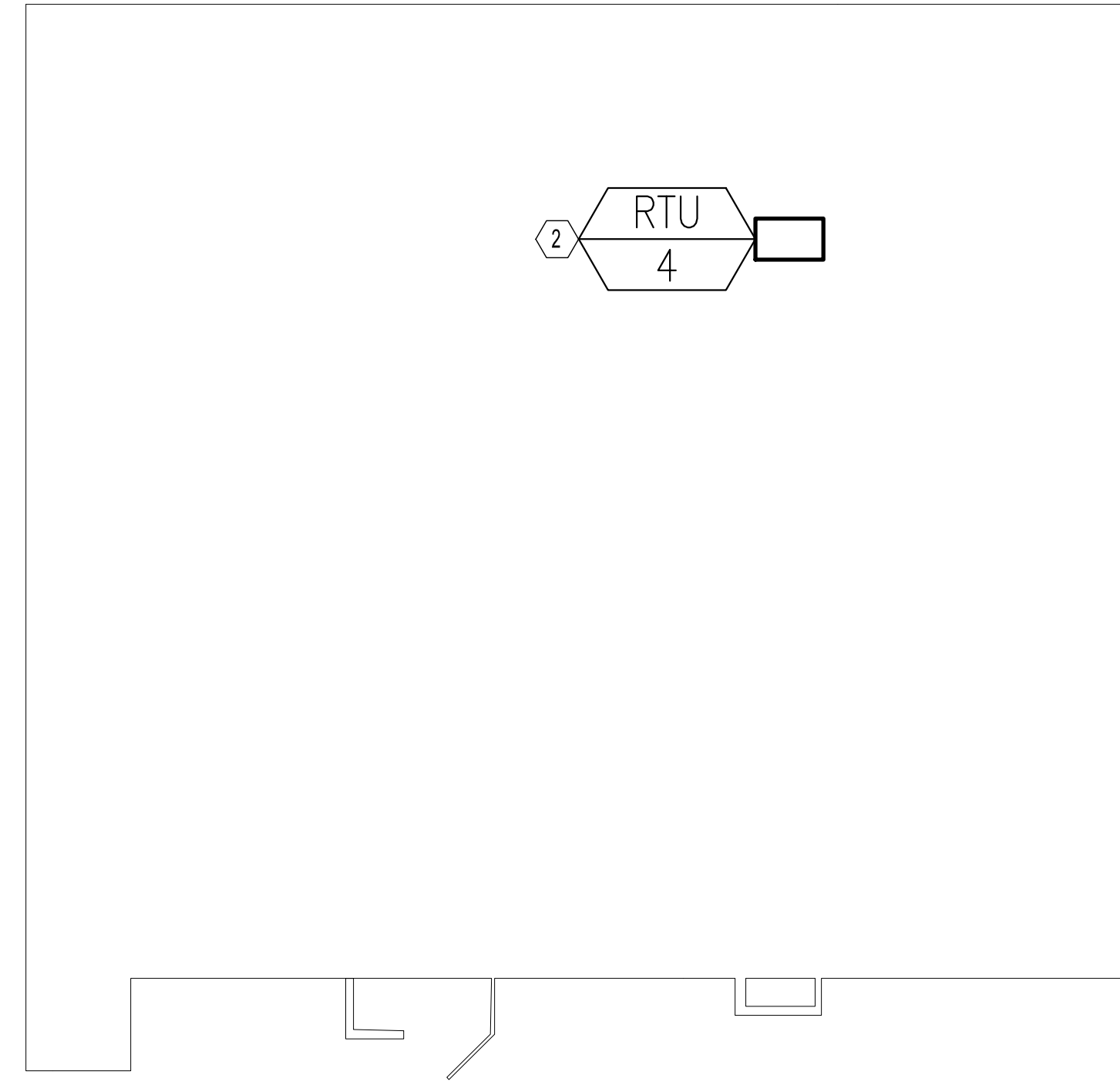
KEY NOTES

- 1 REMOVE EXISTING ROOFTOP UNIT. REMOVE EXISTING ROOF CURB ADAPTER.
- 2 INSTALL PACKAGED ROOFTOP UNIT IN ACCORDANCE WITH MANUFACTURER'S RECOMMENDATIONS. PROVIDE NEW WEATHERPROOFED ROOF CURB ADAPTER. REUSE EXISTING ROOF CURB. ATTACH IAW WITH MANUFACTURER'S INSTRUCTIONS TO MEET WIND RATING REQUIREMENTS.



MECHANICAL ROOF DEMO PLAN

1/16" = 1'-0"



MECHANICAL ROOF NEW WORK PLAN

1/16" = 1'-0"

PACKAGED DX ROOFTOP UNIT SCHEDULE

MARK	REFRIGERANT TYPE	FAN DATA				COOLING DESIGN CONDITIONS				HEATING DESIGN CONDITIONS				ELECTRICAL			FILTER DATA		UNIT WEIGHT (LB)	BASIS OF DESIGN							
		AIRFLOW (CFM)	MIN. OA (CFM)	ESP (IN. WC.)	FAN MOTOR HP	TOTAL (MBH)	EAT (°F)		AMBIENT (°F)	EER2	TOTAL (MBH)	EAT DB (°F)	AMBIENT (°F)	COP2	AUXILIARY HEAT			ELEC. V/Φ/Hz		MCA	MOCP	TYPE	EFFICIENCY	MAKE	MODEL		
							DB	WB							TYPE	INPUT HEATING CAPACITY (MBH)	OUTPUT HEATING CAPACITY (MBH)									STAGES	
RTU-4	R-454B	1500	150	1.5	3	58.3	40.1	80	67	95	12.8	55.6	65	47	3.74	GAS	80	64.8	2	208/3/60	31	45	2"-PLEATED	MERV 8	1000	TRANE	DHK060A3S0L

REMARKS:

- 1) COOLING AND HEATING CAPACITIES RATED AT AHRI STANDARD CONDITIONS.
- 2) PROVIDE DISCONNECT SWITCH.
- 3) PROVIDE TWO-STAGE COMPRESSOR AND VARIABLE SPEED ECM FAN.
- 4) PROVIDE ROOF CURB ADAPTER.
- 5) PROVIDE SEACOAST PROTECTION COATING FOR CONDENSER COIL AND EVAPORATOR COIL.
- 6) PROVIDE 2-HEAT, 2-COOL THERMOSTAT.
- 7) PROVIDE 120V CONVENIENCE OUTLET ON RTU.

DUCTLESS SPLIT-SYSTEM HEAT PUMP SCHEDULE (INDOOR UNIT)

MARK	ASSOCIATED OUTDOOR UNIT	TYPE	REFRIGERANT TYPE	FAN DATA				COOLING DESIGN CONDITIONS				HEATING DESIGN CONDITIONS				ELECTRICAL	UNIT WEIGHT (LB)	BASIS OF DESIGN	
				AIRFLOW (CFM)	TOTAL (MBH)	EAT (°F)		AMBIENT (°F)	SEER2	TOTAL (MBH)	EAT DB (°F)	AMBIENT (°F)	HSPF2	ELEC. V/Φ/Hz	MAKE			MODEL	
						DB	WB												
AHU-1019	CU-1019	CEILING CASSETTE	R-454B	530-810	24	80	67	95	22.6	29	70	47	9.8	208/1/60	60	TRANE	PLA-AE24NL		

REMARKS:

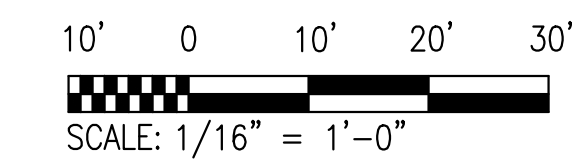
- 1) COOLING AND HEATING CAPACITIES RATED AT AHRI STANDARD CONDITIONS.
- 2) PROVIDE VARIABLE SPEED FAN.
- 3) PROVIDE HARD-WIRED WALL-MOUNTED THERMOSTAT.
- 4) SUBMIT APPROXIMATE REFRIGERANT LINE LENGTHS (TOTAL AND VERTICAL) AND SIZES FOR REVIEW WITH PRODUCT DATA.
- 5) INDOOR UNIT IS POWERED BY OUTDOOR UNIT. SEE OUTDOOR UNIT SCHEDULE.
- 6) PROVIDE INTEGRAL CONDENSATE PUMP.
- 7) PROVIDE CONTROL WIRING FROM INDOOR UNIT TO ASSOCIATED CONDENSING UNIT AS REQUIRED.

DUCTLESS SPLIT-SYSTEM HEAT PUMP SCHEDULE (OUTDOOR UNIT)

MARK	LOCATION	REFRIGERANT TYPE	COOLING DESIGN CONDITIONS				HEATING DESIGN CONDITIONS				ELECTRICAL			UNIT WEIGHT (LB)	BASIS OF DESIGN		
			TOTAL (MBH)	EAT (°F)		AMBIENT (°F)	SEER2	TOTAL (MBH)	EAT DB (°F)	AMBIENT (°F)	HSPF2	ELEC. V/Φ/Hz	MCA		MOCP	MAKE	MODEL
				DB	WB												
CU-1019	EXTERIOR WALL-MOUNTED	R-454B	24	80	67	95	22.6	29	70	47	9.8	208/1/60	22	37	160	TRANE	PUZ-AH24NL

REMARKS:

- 1) PROVIDE VARIABLE-SPEED INVERTER COMPRESSOR.
- 2) COOLING AND HEATING CAPACITIES RATED AT AHRI STANDARD CONDITIONS.
- 3) SIZE REFRIGERANT PIPING PER MANUFACTURER'S RECOMMENDATIONS. SUBMIT APPROXIMATE REFRIGERANT LINE LENGTHS (TOTAL AND VERTICAL) AND SIZES FOR REVIEW WITH PRODUCT DATA.
- 4) PROVIDE HAIL GUARD FOR CONDENSER COIL.
- 5) PROVIDE SEACOAST PROTECTION COATING FOR ALL COILS.
- 6) PROVIDE WALL-MOUNTING BRACKET KIT FOR COMPLETE INSTALLATION ON EXTERIOR WALL.



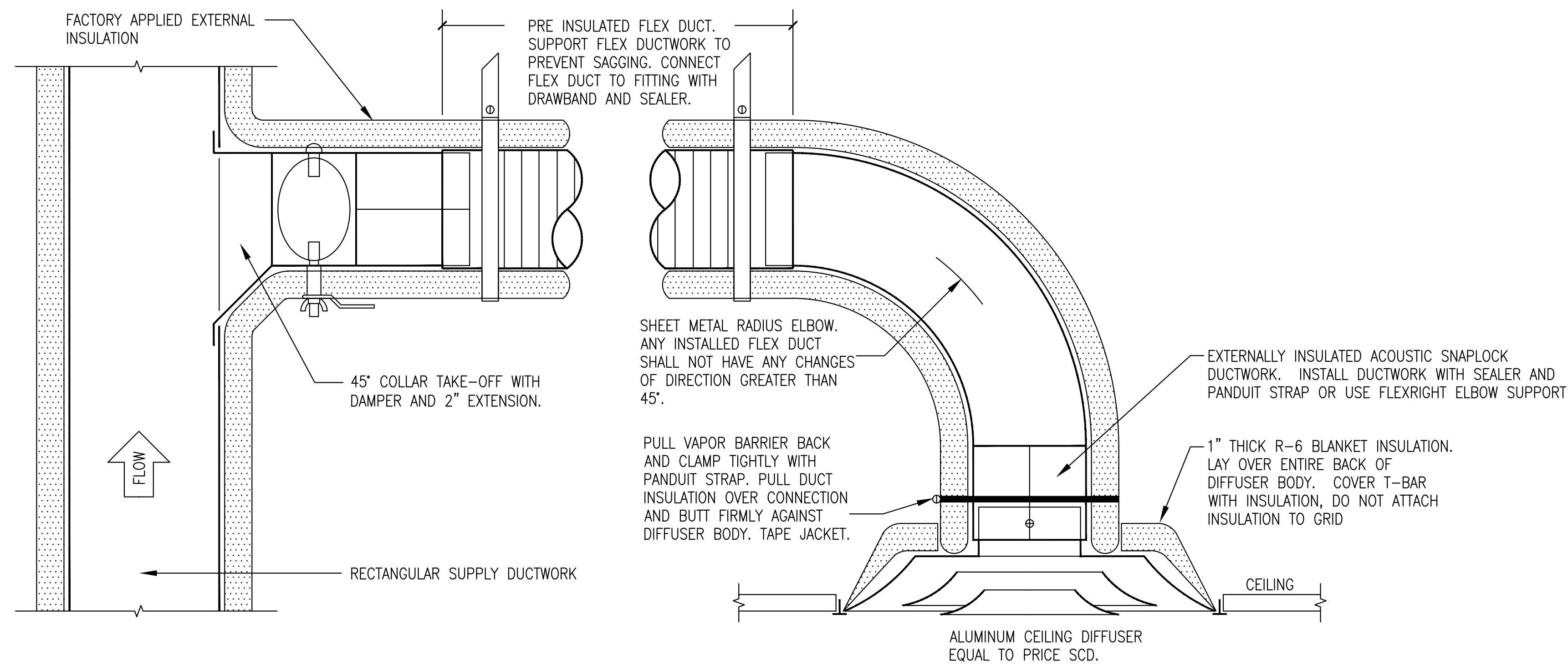
35% SUBMITTAL

REVISION	DATE	DESCRIPTION	BY	APPR'D
BASE CIVIL ENGINEER EGLIN AIR FORCE BASE, FLORIDA				
DATE		TITLE		
SIGNATURE		REPLACE ROOF TOP HVAC PACKAGE UNITS #1 AND #2 B12		
APPROVED				
CENM				
DRAWN BY: TJM PROJ. ENGR.: GDP				
SABER AS-BUILT DRAWING BASED ON 35% DESIGN		CONTENTS		
		MECHANICAL ROOF DEMO PLAN MECHANICAL ROOF NEW WORK PLAN		
APPROVED		DATE		
96 CEG/CEN		29 AUG 2025		
APPROVED		SCALE		
BASE CIVIL ENGINEER		AS SHOWN		
SPEC. NO.	PROJ. NO.	DRAWING NO.	FILE NO.	SHEET
	FTFA 25-CB63			4 OF 7

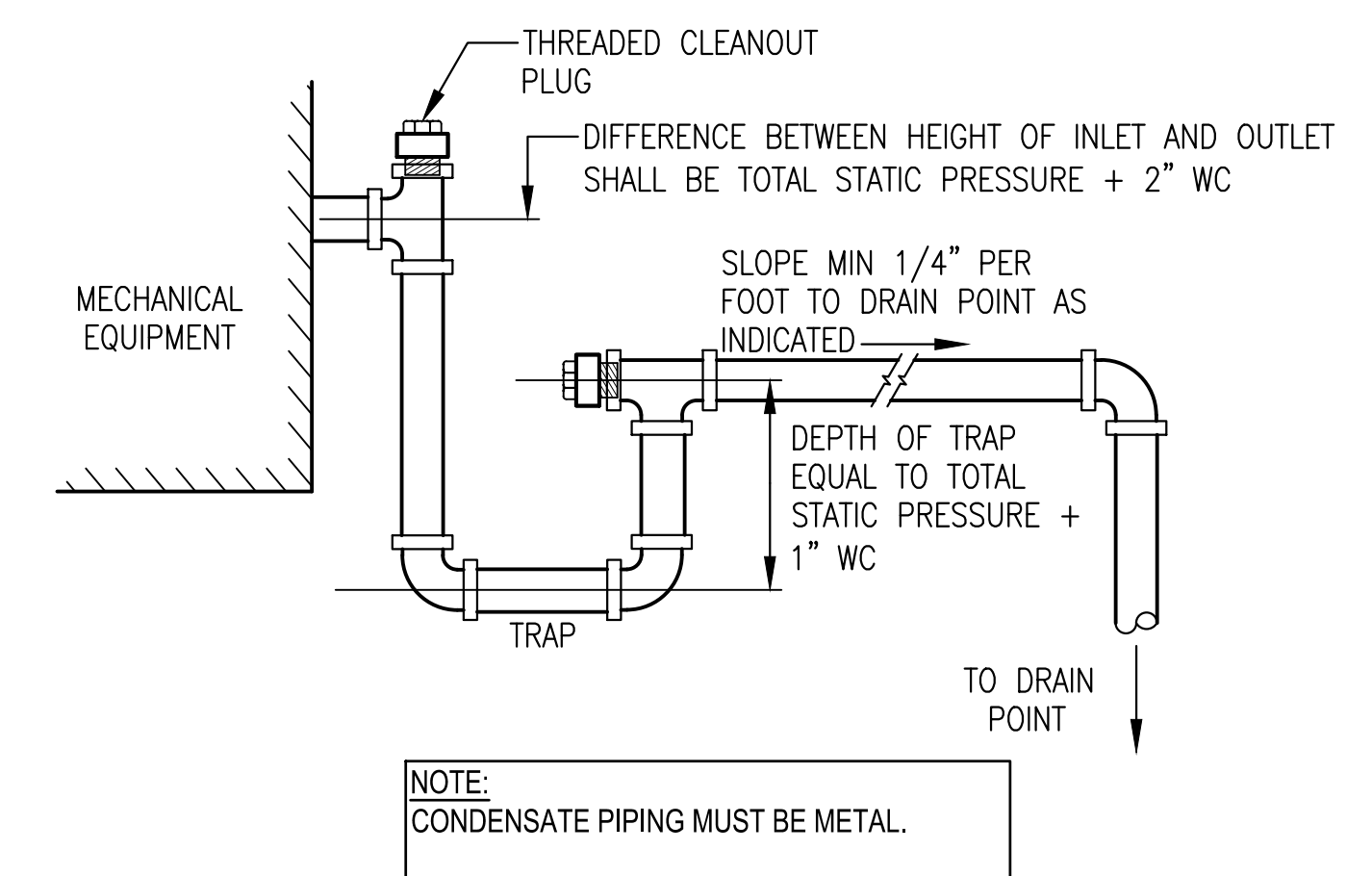
PETERSON ENGINEERING INC.

(PROF. ENG. #: 3600)
75 SOUTH "F" STREET
PENSACOLA, FLORIDA 32502
(850) 434-0513
PEI 25109

INDEX NO.
M-102



1 ROUND DUCT TAKEOFF TO DIFFUSER DETAIL
NOT TO SCALE



2 TYPICAL CONDENSATE TRAP DETAIL
NOT TO SCALE

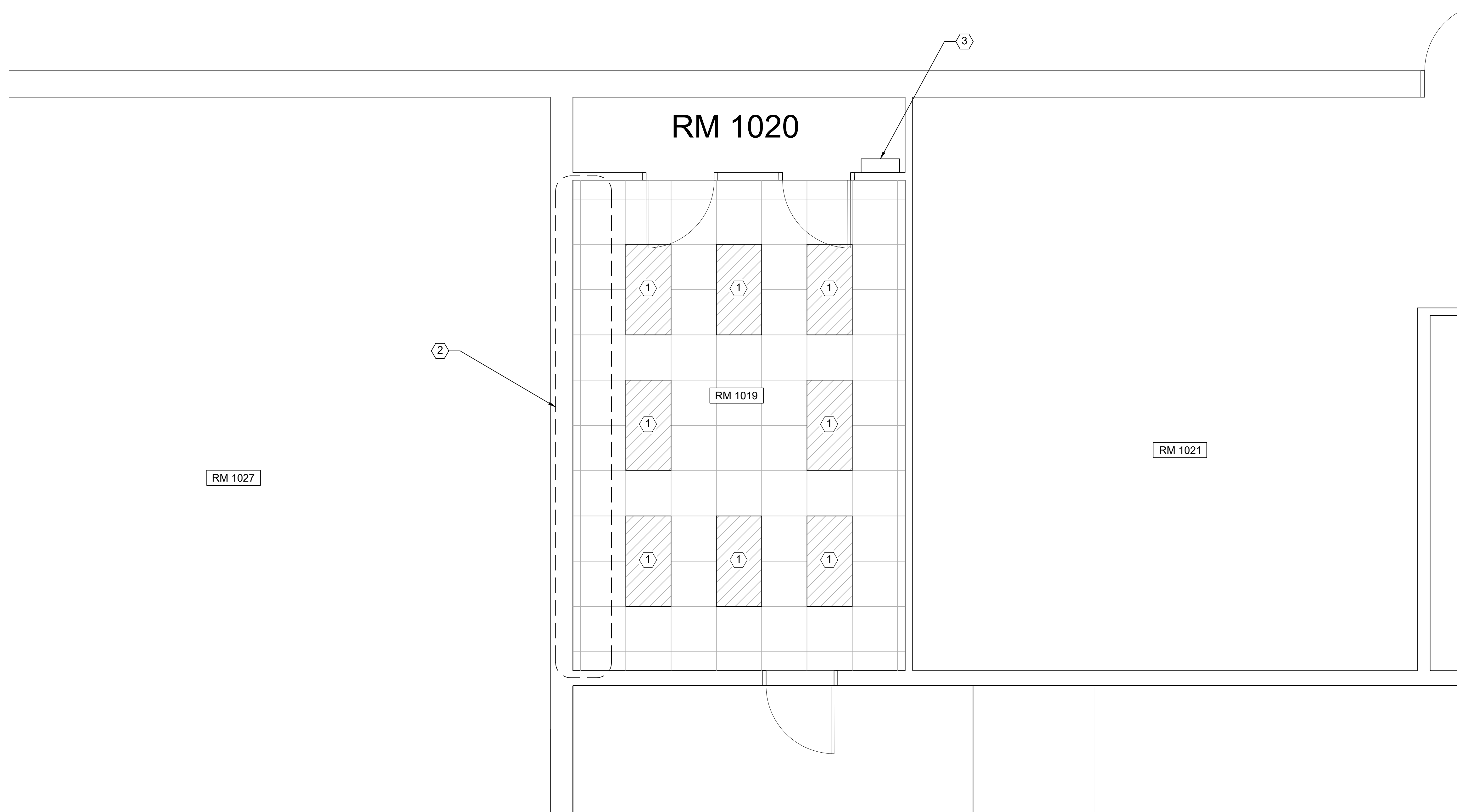
35% SUBMITTAL

REVISION	DATE	DESCRIPTION	BY	APPR'D
BASE CIVIL ENGINEER EGLIN AIR FORCE BASE, FLORIDA				
SABER PROJECT MANAGER		TITLE		
DATE		REPLACE ROOF TOP HVAC PACKAGE UNITS #1 AND #2 B12		
SIGNATURE				
APPROVED				
CENM				
PROJ. ENGR. GDP				
SABER AS-BUILT DRAWING BASED ON 35% DESIGN		CONTENTS		
		MECHANICAL DETAILS		
APPROVED		APPROVED		DATE
96 CEG/CEN		APPROVED		29 AUG 2025
APPROVED		BASE CIVIL ENGINEER		SCALE
				AS SHOWN
SPEC. NO.	PROJ. NO.	DRAWING NO.	FILE NO.	SHEET
	FTFA 25-CB63			5 OF 7

PETERSON ENGINEERING INC.

(PROF. ENG. #: 3600)
75 SOUTH "F" STREET
PENSACOLA, FLORIDA 32502
(850) 434-0513
PEI 25109

INDEX NO.
M-501

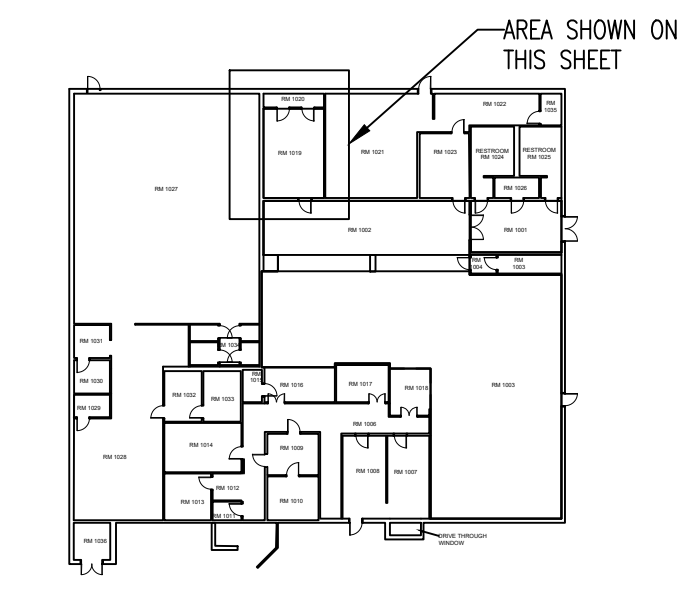


1 ELECTRICAL PLAN

35% PRELIMINARY 02 SEPTEMBER 2025

ELECTRICAL DEMO AND NEW WORK

- ① REMOVE EXISTING 2X4 FLUORESCENT BALLAST FIXTURES. INSTALL NEW LED 2X4 TROFFER LIGHTS IN THE NEW GRID SYSTEM.
- ② PROVIDE NEW CONNECTIONS TO NEW DUCTLESS MINI-SPLIT (ROOM 1019) FROM ROOM 1020.
- ③ 4X PACK LIGHTS TO BE REMOVED AND RETURNED TO THE GOVERNMENT. MCT CABLE TO BE REMOVED TO THE NEAREST JUNCTION BOX.

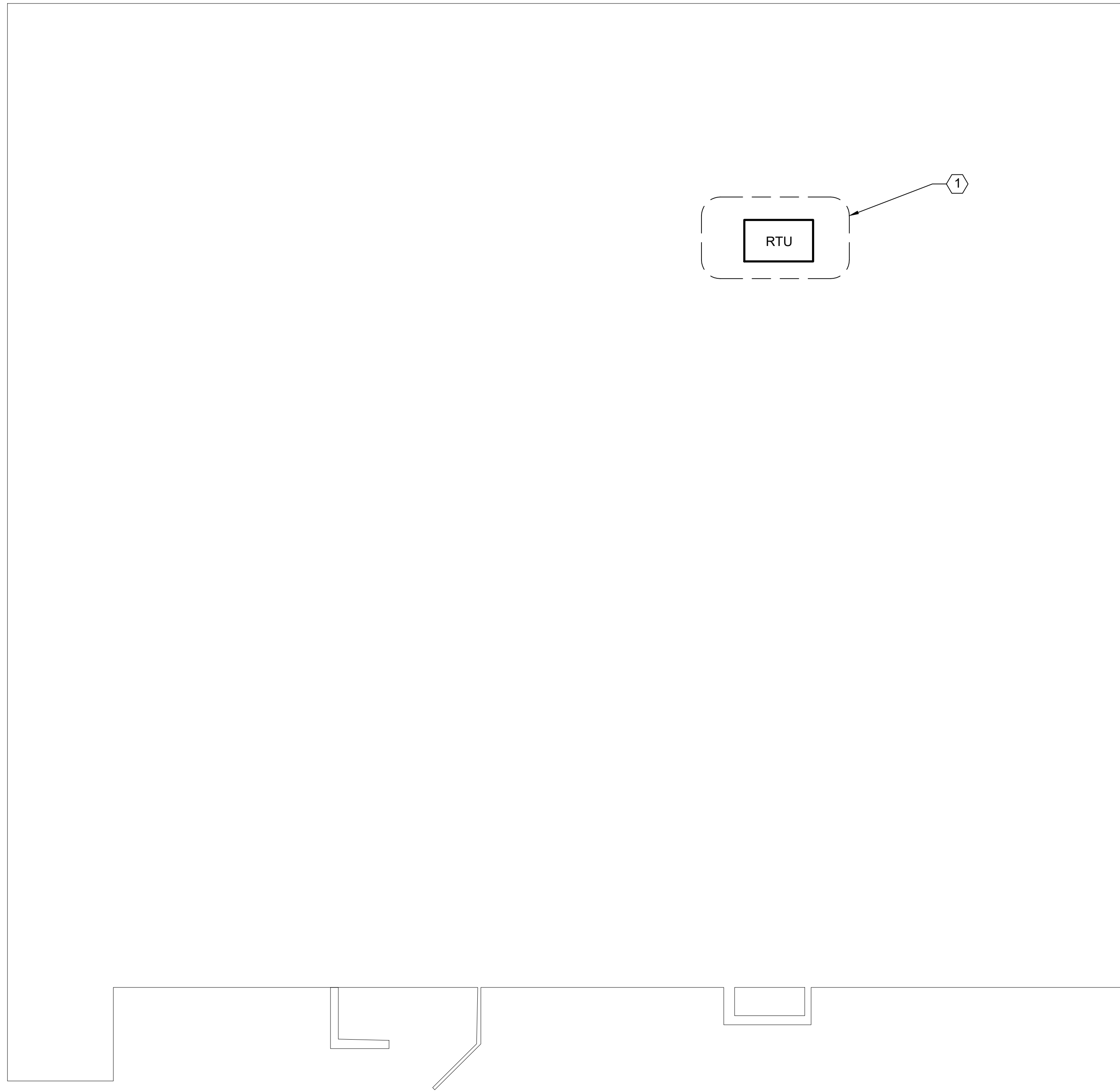


KEY PLAN



INDEX NO.
E-101

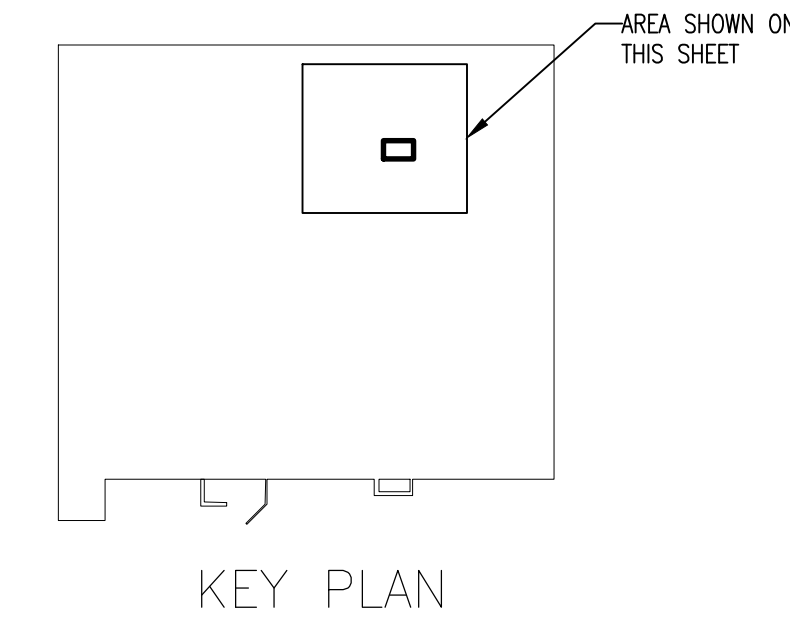
REVISION	DATE	DESCRIPTION	BY	APPR'D
BASE CIVIL ENGINEER EGLIN AIR FORCE BASE, FLORIDA				
SABER PROJECT MANAGER		TITLE RPR- REPLACE ROOF TOP HVAC PACKAGE UNITS #1 AND #2 B12		
DATE _____ SIGNATURE _____ APPROVED _____ CENM _____ DRAWN BY <u>A. PORTER</u> PROJ. ENGR. SR. ENGINEER		CONTENTS ELECTRICAL 1ST FLOOR DEMO AND NEW WORK PLAN		
SABER DRAWING BASED ON 35% DESIGN		APPROVED _____ DATE 02 SEPTEMBER 2025 96 CEG/CEN APPROVED _____ SCALE 3/8" = 1' - 0" BASE CIVIL ENGINEER		
SPEC. NO.	PROJ. NO.	DRAWING NO.	FILE NO.	SHEET 6 OF 7
	FTFA 25-CB63			



1 ELECTRICAL PLAN - ROOF

ELECTRICAL DEMO AND NEW WORK

- 1 REMOVE AND PROVIDE NEW ELECTRICAL DISCONNECT TO PACKAGED RTU.
- UPDATE PANEL SCHEDULES AND LABEL ALL NEW CIRCUITS.



KEY PLAN



INDEX NO.
E-102

35% PRELIMINARY 02 SEPTEMBER 2025

REVISION	DATE	DESCRIPTION	BY	APPR'D
BASE CIVIL ENGINEER EGLIN AIR FORCE BASE, FLORIDA				
SABER PROJECT MANAGER		TITLE RPR- REPLACE ROOF TOP HVAC PACKAGE UNITS #1 AND #2 B12		
DATE _____ SIGNATURE _____ APPROVED _____ CENM _____ DRAWN BY <u>A. PORTER</u> PROJ. ENGR. SR. ENGINEER		CONTENTS ELECTRICAL ROOF NEW WORK PLAN		
SABER DRAWING BASED ON 35% DESIGN		APPROVED _____ DATE 02 SEPTEMBER 2025 96 CEG/CEN APPROVED _____ SCALE 1/8" = 1' - 0" BASE CIVIL ENGINEER		
SPEC. NO.	PROJ. NO.	DRAWING NO.	FILE NO.	SHEET 7 OF 7
	FTFA 25-CB63			