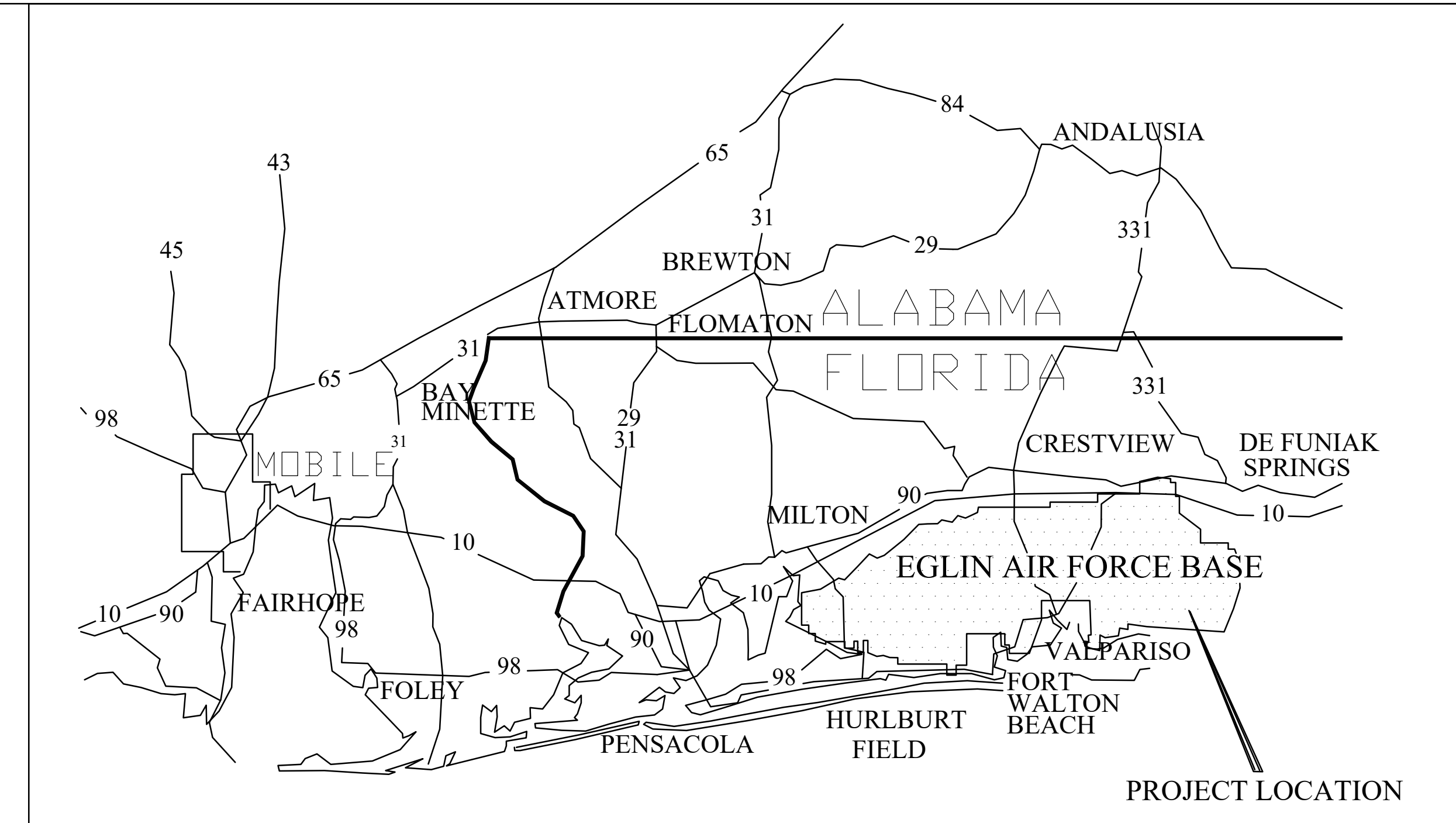


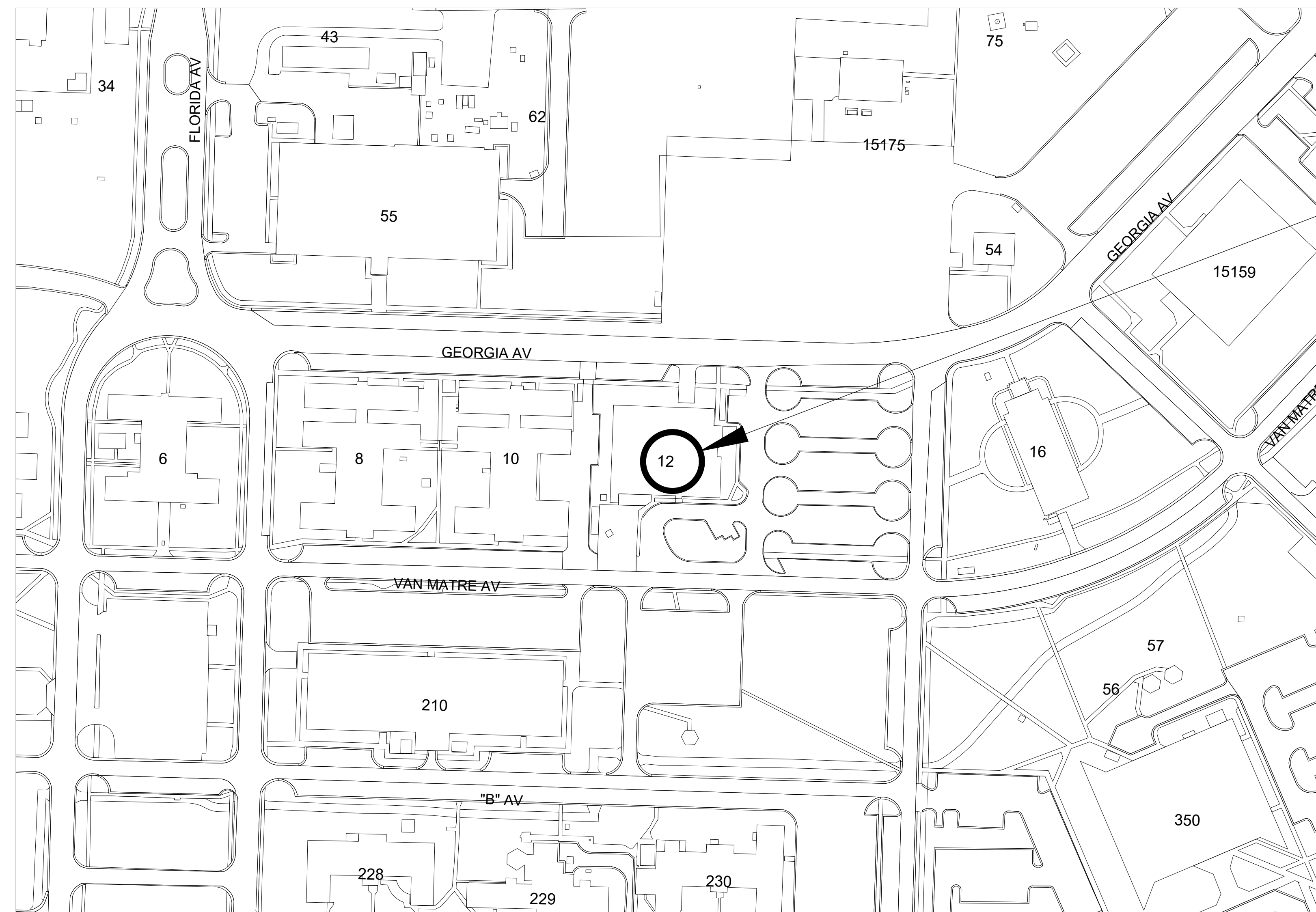
RPR - RENOVATE FOOD COURT AREA AND HVAC SYSTEM B12

Eglin Air Force Base, FL

Project No. : FTFA 25-AD19

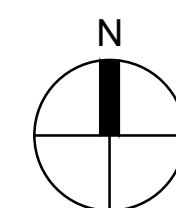


VICINITY MAP



BLDG. 12
LOCATION

PROJECT LOCATION MAP

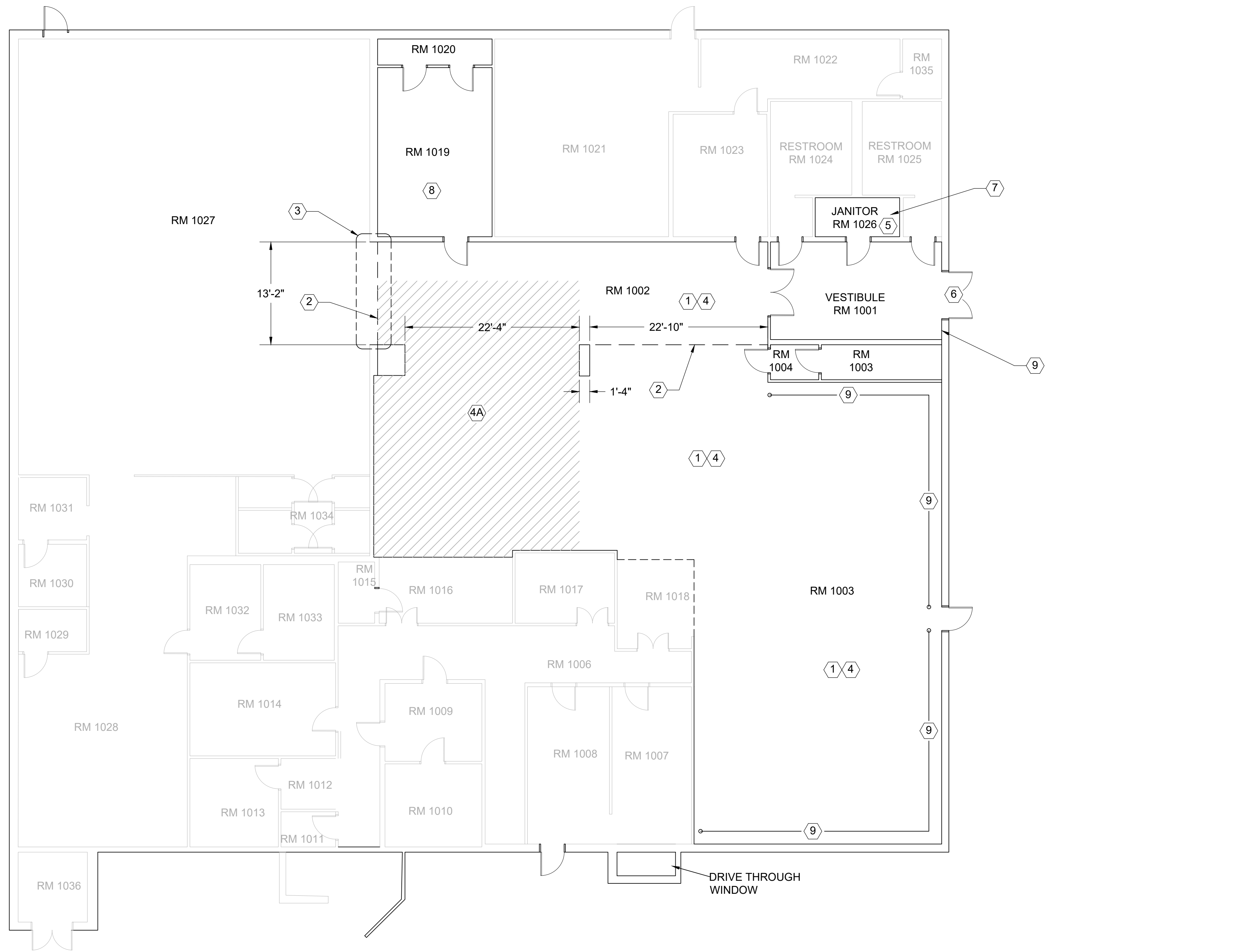


DRAWING INDEX	
GENERAL	
G-001	TITLE, VICINITY AND LOCATION MAPS AND INDEX OF DRAWINGS
ARCHITECTURAL	
A-101	ARCHITECTURAL DEMO AND NEW WORK
MECHANICAL	
M-101	MECHANICAL DEMO AND NEW WORK
ELECTRICAL	
E-101	ELECTRICAL DEMO AND NEW WORK
PLUMBING	
P-101	PLUMBING NEW WORK
ACCESS CONTROL	
X-101	ACCESS CONTROL NEW WORK

35% PRELIMINARY 17 JULY 2025

REVISION	DATE	DESCRIPTION	BY	APPR'D
BASE CIVIL ENGINEER EGLIN AIR FORCE BASE, FLORIDA				
SABER PROJECT MANAGER		TITLE RPR-RENOVATE FOOD COURT AREA AND HVAC SYSTEM B12		
DATE _____ SIGNATURE _____ APPROVED _____ CENM _____ DRAWN BY <u>A. PORTER</u> PROJ. ENGR. SR. ENGINEER		CONTENTS TITLE, VICINITY AND LOCATION MAPS AND INDEX OF DRAWINGS APPROVED _____ DATE 17 JULY 2025 96 CEG/CEN APPROVED _____ SCALE BASE CIVIL ENGINEER NOT TO SCALE		
SABER DRAWING BASED ON 35% DESIGN		SPEC. NO.	PROJ. NO. FTFA 25-AD19	DRAWING NO. FILE NO.
INDEX NO. G-001		SHEET 1 OF 6		





1 ARCHITECTURAL PLAN
Scale: 1/8" = 1' - 0"

35% PRELIMINARY 17 JULY 2025

GENERAL:

PROTECT EXISTING CARPET IN ROOM 1027 FROM DEBRIS AND DAMAGE DURING DEMO OF COIL ROLL-UP DOOR AND INSTALLATION OF NEW WALL AND DOOR BETWEEN ROOMS 1027 AND 1002.

ARCHITECTURAL DEMO AND NEW WORK

- ① DEMO SUSPENDED CEILING GRID AND TILES.
- ② DEMO 3 ROLL-UP COIL DOORS AND ASSOCIATED HARDWARE FROM MAIN ENTRANCE HALLWAY.
- ③ INSTALL NEW DIVIDING WALL AND DOOR FRAME AND HARDWARE PRIOR TO FRONT DOOR REPAIRS.
- ④ DEMO OLD QUARRY TILE, AND VCT.
- ④A FLOORING DEMO-ONLY AREA. NO NEW FLOORING WORK.
- ⑤ DEMO OLD MOP SINK.
- ⑥ INFILL STOREFRONT WITH METAL STUD GYPSUM WALLBOARD. INSTALL EIFS PER BASE STANDARDS EXTERIOR.
- ⑦ EPOXY JANITOR CLOSET.
- ⑧ REPAIR GYPSUM WALLBOARD, LEVEL FOR PAINT.
- ⑨ PAINT WALLS WHERE SPECIFIED.

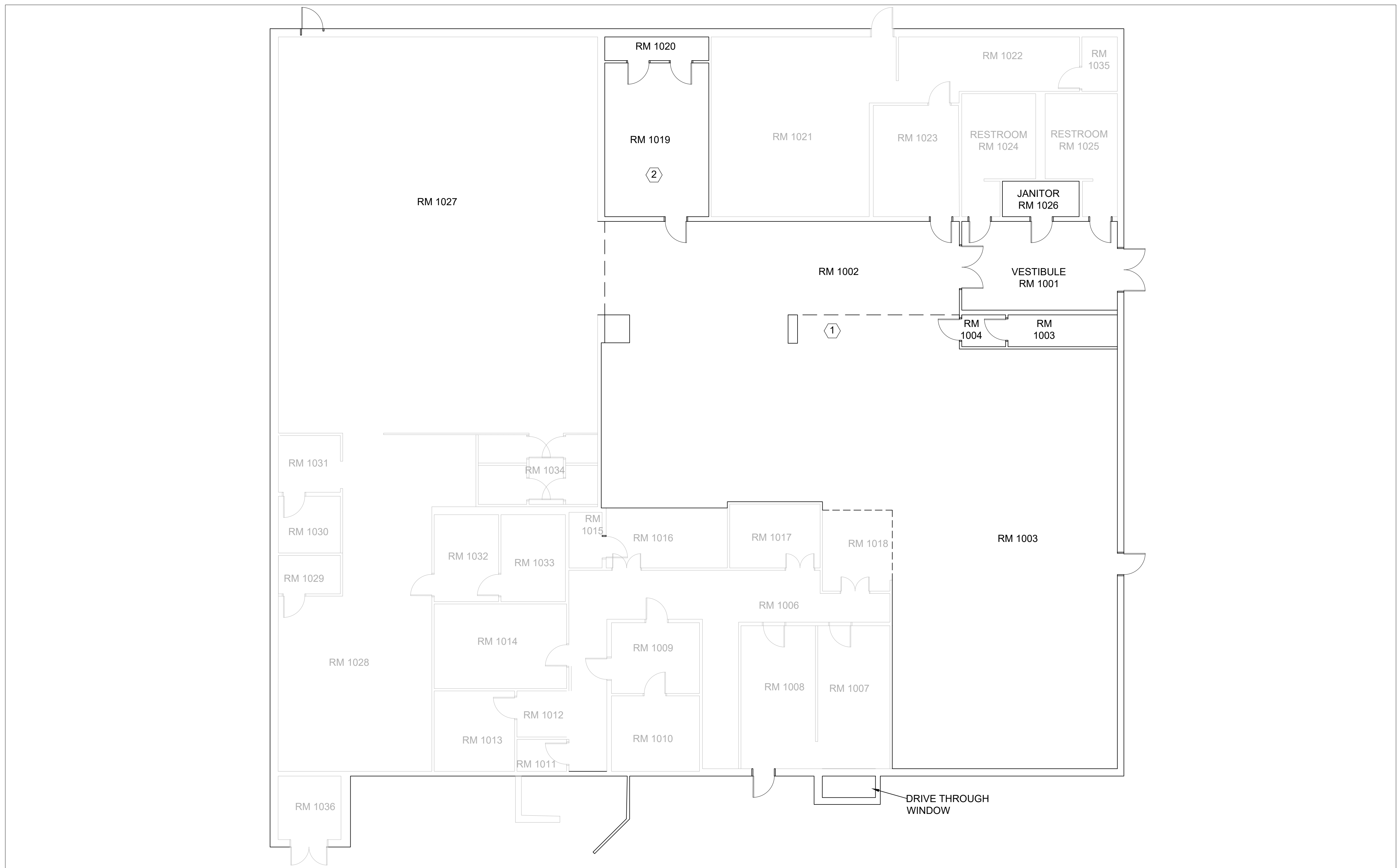
REVISION	DATE	DESCRIPTION	BY	APPR'D

BASE CIVIL ENGINEER
EGLIN AIR FORCE BASE, FLORIDA

SABER PROJECT MANAGER	TITLE
DATE _____	RPR-RENOVATE FOOD COURT AREA AND HVAC SYSTEM B12
SIGNATURE _____	
APPROVED _____	
CENM _____	
DRAWN BY A. PORTER PROJ. ENGR. SR. ENGINEER	



SABER DRAWING BASED ON 35% DESIGN		CONTENTS
ARCHITECTURAL DEMO AND NEW WORK		DATE 17 JULY 2025
APPROVED 96 CEG/CEN	APPROVED	SCALE 1/8" = 1' - 0"
BASE CIVIL ENGINEER	PROJ. NO. FTFA 25-AD19	DRAWING NO. FILE NO.
SPEC. NO.	INDEX NO. A-101	SHEET 2 OF 6



1 PLUMBING PLAN
Scale: 1/8" = 1' - 0"

- PLUMBING NEW WORK**
- ① CAP FLOOR DRAIN IN OLD BAR AREA AND KITCHEN
 - ② CAP OLD PLUMBING.

35% PRELIMINARY 17 JULY 2025

REVISION	DATE	DESCRIPTION	BY	APPR'D

BASE CIVIL ENGINEER
EGLIN AIR FORCE BASE, FLORIDA

SABER
PROJECT MANAGER
DATE _____
SIGNATURE _____
APPROVED _____
CENM _____
DRAWN BY A. PORTER
PROJ. ENGR. SR. ENGINEER

TITLE
**RPR-RENOVATE FOOD
COURT AREA AND HVAC
SYSTEM B12**

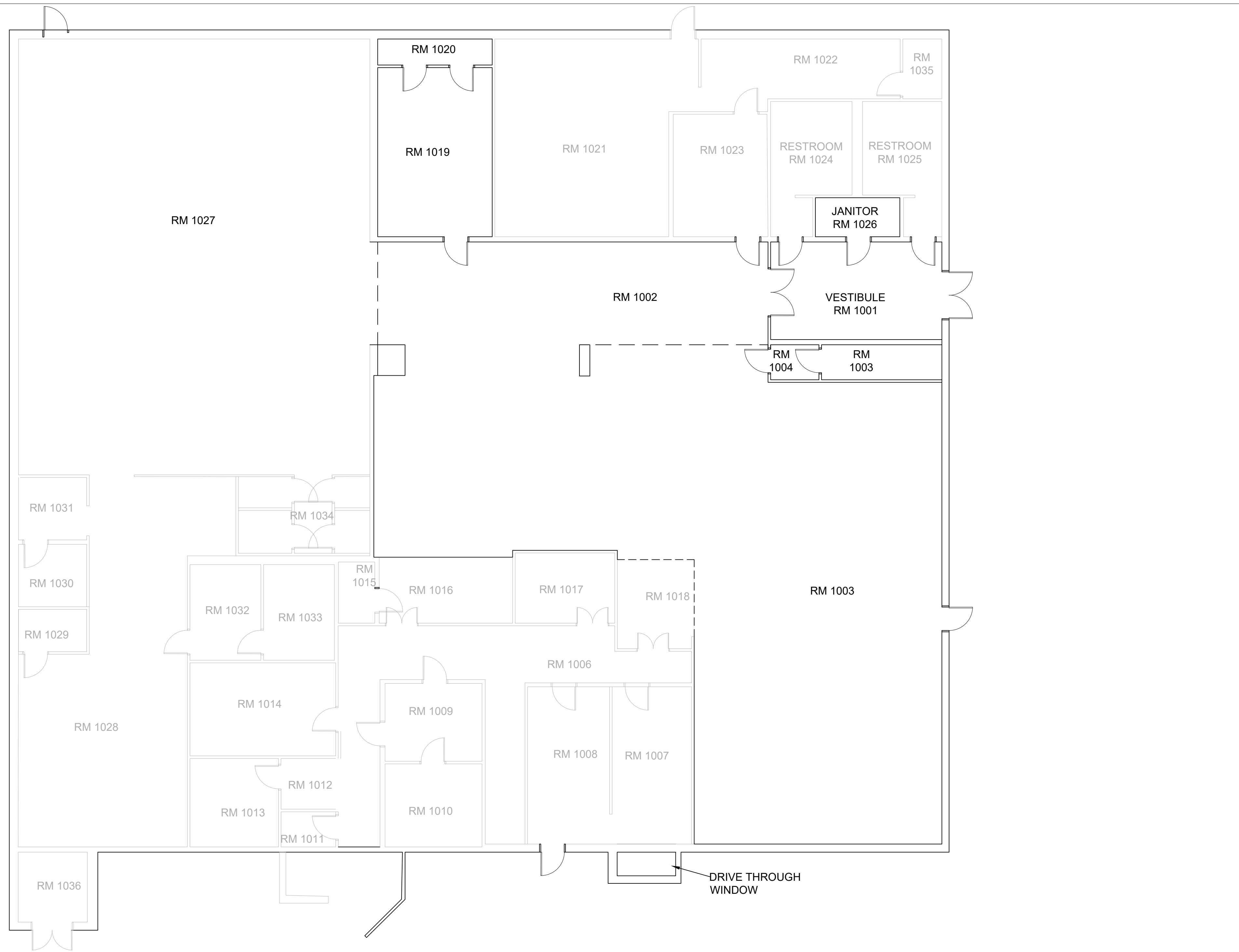
SABER
DRAWING
BASED ON
35% DESIGN

CONTENTS
PLUMBING NEW WORK

APPROVED	DATE		
96 CEG/CEN	17 JULY 2025		
APPROVED	SCALE		
BASE CIVIL ENGINEER	1/8" = 1' - 0"		
SPEC. NO.	PROJ. NO.	DRAWING NO.	FILE NO.
	FTFA 25-AD19		



INDEX NO.
P-101



1 MECHANICAL PLAN
Scale: 1/8" = 1' - 0"

35% PRELIMINARY 17 JULY 2025

GENERAL:

PERFORM LOAD CALCULATIONS TO DETERMINE HVAC SYSTEM TO UTILIZE IN SPECIFIED AREA IN THE FACILITY.

DEMO EXISTING 15-TON ROOFTOP HVAC SYSTEM AND ASSOCIATED DUCTWORK/HARDWARE. INSTALL THE DETERMINED ROOFTOP HVAC SYSTEM AND ASSOCIATED DUCTWORK/HARDWARE TO INCLUDE ASSOCIATED DDC CONTROLS IAW EGLIN DDC DESIGN MANUAL. THIS WILL ALSO INCLUDE INSTALLATION OF DUCT SMOKE DETECTORS.

REVISION	DATE	DESCRIPTION	BY	APPR'D

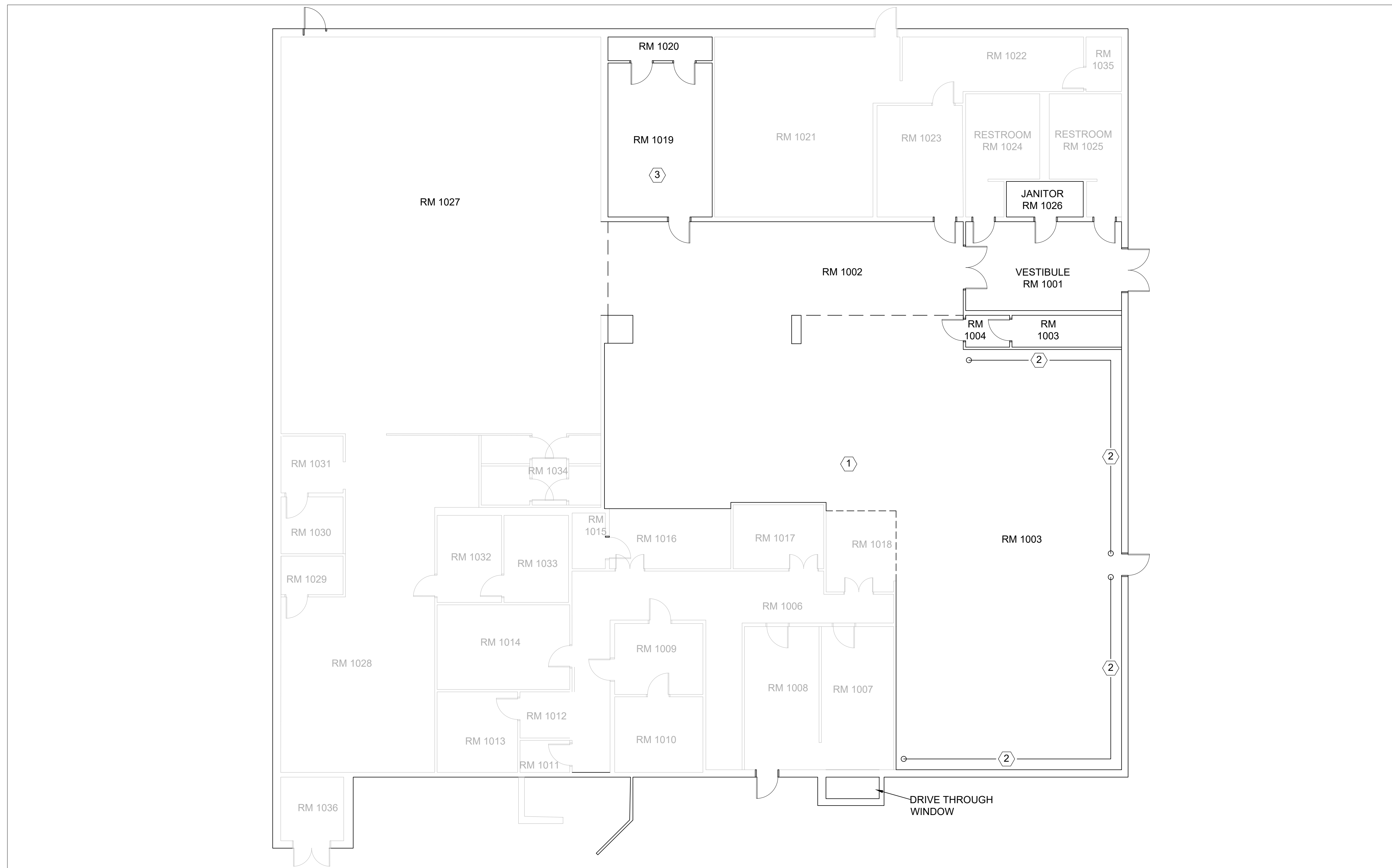
BASE CIVIL ENGINEER
EGLIN AIR FORCE BASE, FLORIDA

SABER PROJECT MANAGER	TITLE
DATE _____	RPR-RENOVATE FOOD COURT AREA AND HVAC SYSTEM B12
SIGNATURE _____	
APPROVED _____	
CENM _____	
DRAWN BY <u>A. PORTER</u> PROJ. ENGR. SR. ENGINEER	

SABER DRAWING BASED ON 35% DESIGN	CONTENTS
APPROVED _____	MECHANICAL DEMO AND NEW WORK
APPROVED _____	
APPROVED _____	DATE
BASE CIVIL ENGINEER	17 JULY 2025
SCALE	1/8" = 1' - 0"
SPEC. NO.	FILE NO.
FTFA 25-AD19	SHEET 4 OF 6



INDEX NO.
M-101



1 ELECTRICAL PLAN
Scale: 1/8" = 1' - 0"

35% PRELIMINARY 17 JULY 2025

ELECTRICAL DEMO AND NEW WORK

- ① DEMO OLD LIGHTING. RECONFIGURE ALL LIGHTING IN SPACE TO PANEL A
- ② REMOVE OLD HIGH VOLTAGE OUTLETS AND REPAIR DAMAGED PLATE COVERS. SPACE OUTLETS EVENLY THROUGH OUT WALL SPACES.
- ③ REPAIR ELECTRICAL BOXES.

REVISION	DATE	DESCRIPTION	BY	APPR'D

BASE CIVIL ENGINEER
EGLIN AIR FORCE BASE, FLORIDA

SABER
PROJECT MANAGER
DATE _____
SIGNATURE _____
APPROVED _____
CENM _____
DRAWN BY A. PORTER
PROJ. ENGR. SR. ENGINEER

TITLE
RPR-RENOVATE FOOD COURT AREA AND HVAC SYSTEM B12

SABER
DRAWING
BASED ON
35% DESIGN

CONTENTS
ELECTRICAL DEMO AND NEW WORK

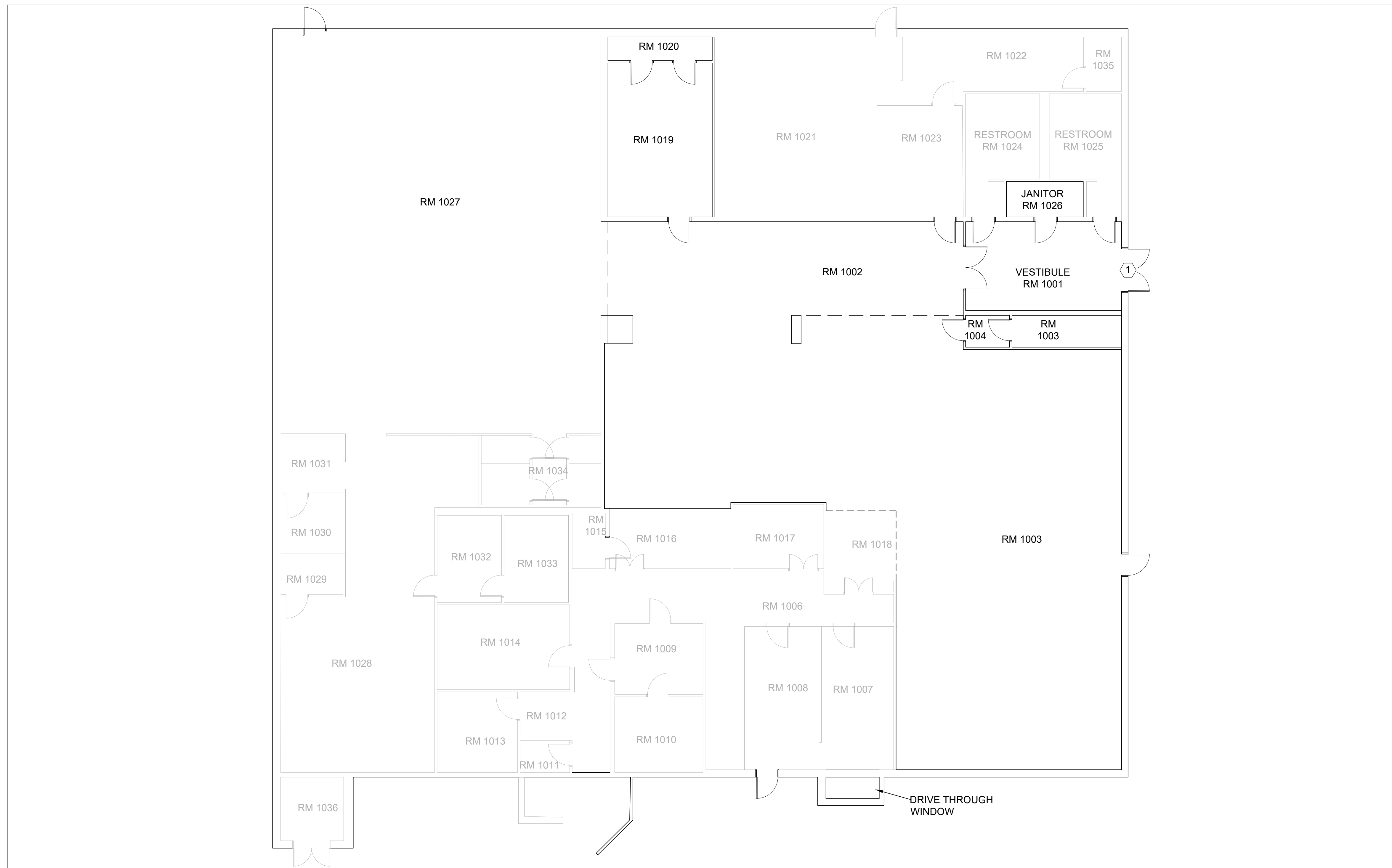
APPROVED _____ DATE 17 JULY 2025
96 CEG/CEN
APPROVED _____ SCALE

BASE CIVIL ENGINEER
1/8" = 1' - 0"



INDEX NO.
E-101

SPEC. NO.	PROJ. NO. FTFA 25-AD19	DRAWING NO.	FILE NO.	SHEET 5 OF 6
-----------	---------------------------	-------------	----------	--------------



1 ACCESS CONTROL PLAN
Scale: 1/8" = 1' - 0"

35% PRELIMINARY 17 JULY 2025

ACCESS CONTROL NEW WORK

1 ROUGH IN ACS FOR FUTURE INSTALL

REVISION	DATE	DESCRIPTION	BY	APPR'D
BASE CIVIL ENGINEER EGLIN AIR FORCE BASE, FLORIDA				
SABER PROJECT MANAGER		TITLE RPR-RENOVATE FOOD COURT AREA AND HVAC SYSTEM B12		
DATE _____ SIGNATURE _____ APPROVED _____ CENM _____ DRAWN BY <u>A. PORTER</u> PROJ. ENGR. SR. ENGINEER		CONTENTS ACCESS CONTROL NEW WORK		
SABER DRAWING BASED ON 35% DESIGN		APPROVED _____ DATE 17 JULY 2025 96 CEG/CEN APPROVED _____ SCALE 1/8" = 1' - 0" BASE CIVIL ENGINEER		
INDEX NO.	PROJ. NO.	DRAWING NO.	FILE NO.	SHEET 6 OF 6
X-101	FTFA 25-AD19			



INDEX NO.
X-101